
Marine Weather Forecast for Lighthouse Greece Pipeline-OSS3

Forecast valid as of 24-Apr-2022 1800 GMT

All times are local.

Today

Winds: NW, 10-15 kts.
Waves: W, 1-2 feet, 4-5 sec.
Currents: E, less than 0.5 knot.

Tonight

Winds: W, 10-15 kts.
Waves: W, 2-3 feet, 4-5 sec.
Currents: SE, 0.5-1 kts.

Monday

Winds: W, 10-15 kts.
Waves: W, 2-3 feet, 4-5 sec.
Currents: E, 0.5-1 kts.

Tuesday Night

Winds: NE, 5-10 kts.
Waves: W, 1-2 feet, 4-5 sec.
Currents: SE, less than 0.5 knot.

Tuesday

Winds: NE, 5-10 kts.
Waves: W, 1-2 feet, 4-5 sec.
Currents: E, less than 0.5 knot.

Wednesday Night

Winds: NE, 5-10 kts.
Waves: W, 0-1 feet, 4-5 sec.
Currents: E, less than 0.5 knot.

Wednesday

Winds: NE, 5-10 kts.
Waves: W, 1-2 feet, 4-5 sec.
Currents: SE, less than 0.5 knot.

Thursday Night

Winds: E, 10-15 kts.
Waves: NE, 1-2 feet, 3-4 sec.
Currents: E, less than 0.5 knot.

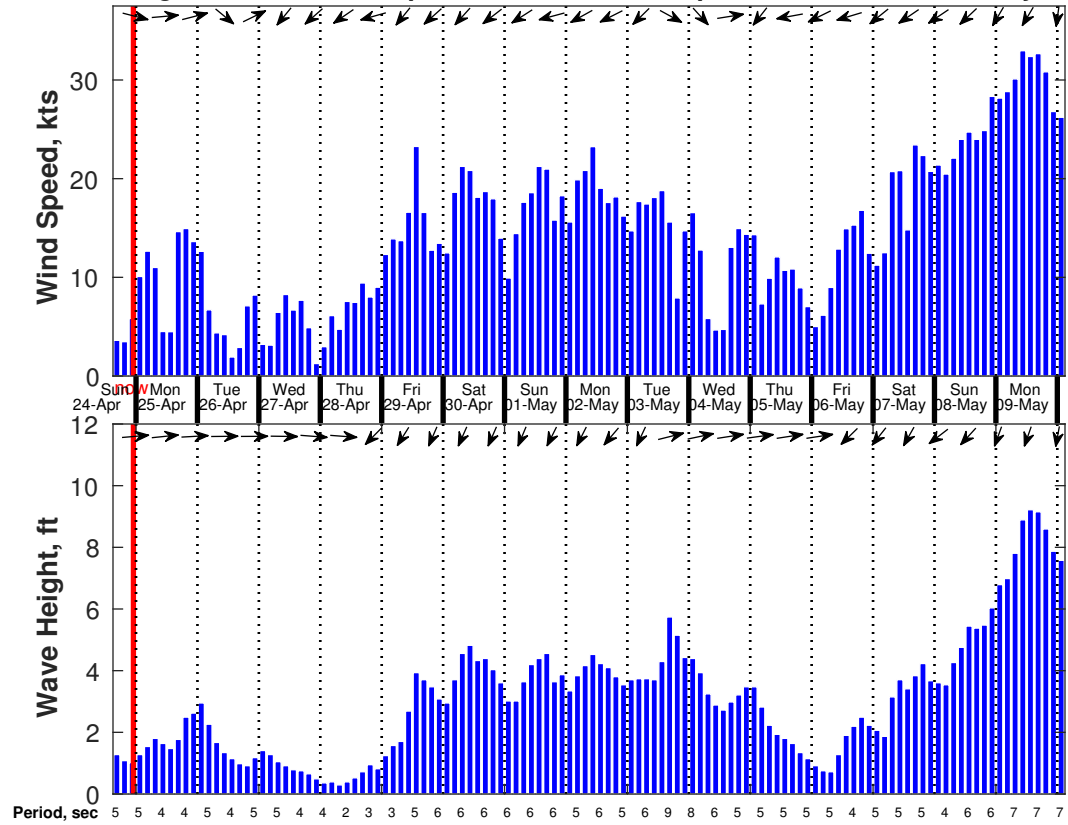
Thursday

Winds: E, 5-10 kts.
Waves: NE, 0-1 feet, 3-4 sec.
Currents: E, less than 0.5 knot.

Friday Night

Winds: NE, 15-20 kts.
Waves: N, 3-4 feet, 5-6 sec.
Currents: SW, less than 0.5 knot.

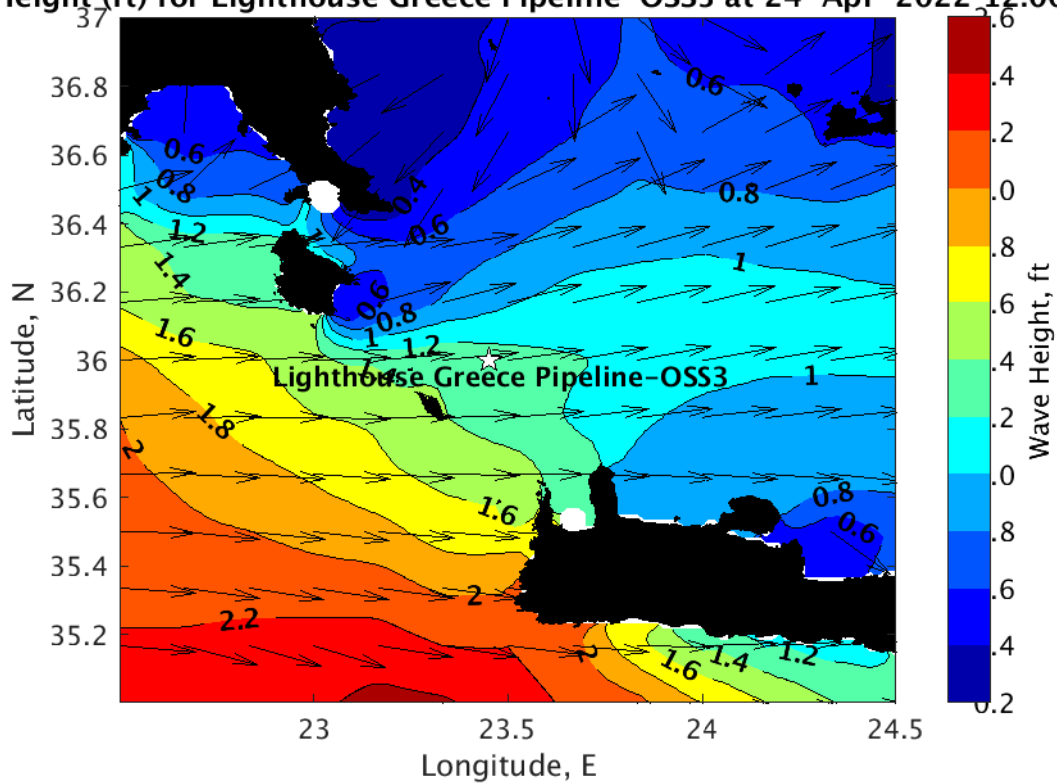
Wind & Wave Forecast for Lighthouse Greece Pipeline-OSS3 from 24-Apr-2022 15:00:00 to 10-May-2022 12:00:00



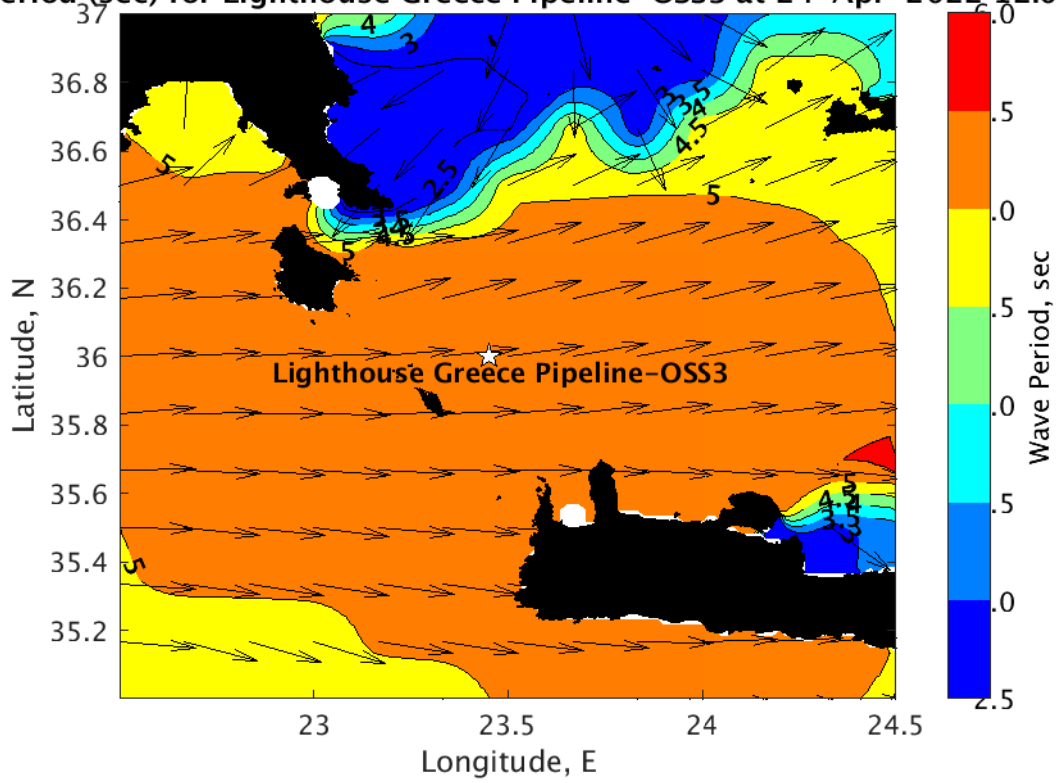
Met Forecast for Lighthouse Greece Pipeline-OSS3 from 24-Apr-2022 12:00:00 to 01-May-2022 12:00:00



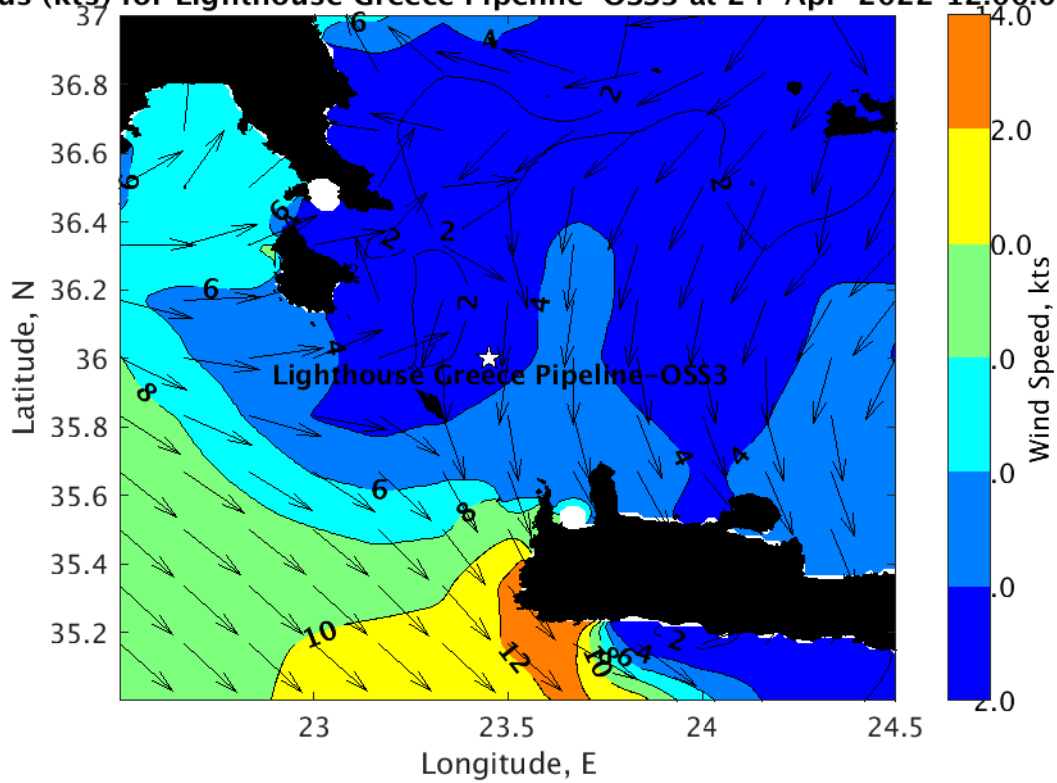
Height (ft) for Lighthouse Greece Pipeline-OSS3 at 24-Apr-2022 12:00:00



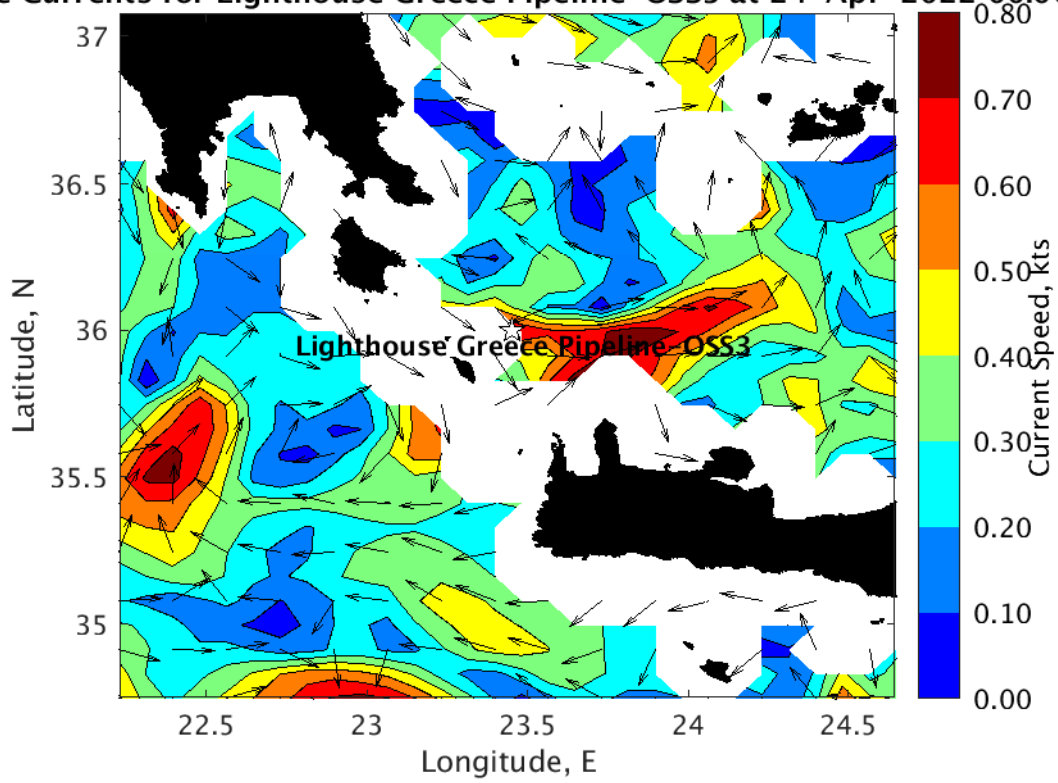
Wave Period (sec) for Lighthouse Greece Pipeline-OSS3 at 24-Apr-2022 12:00:00



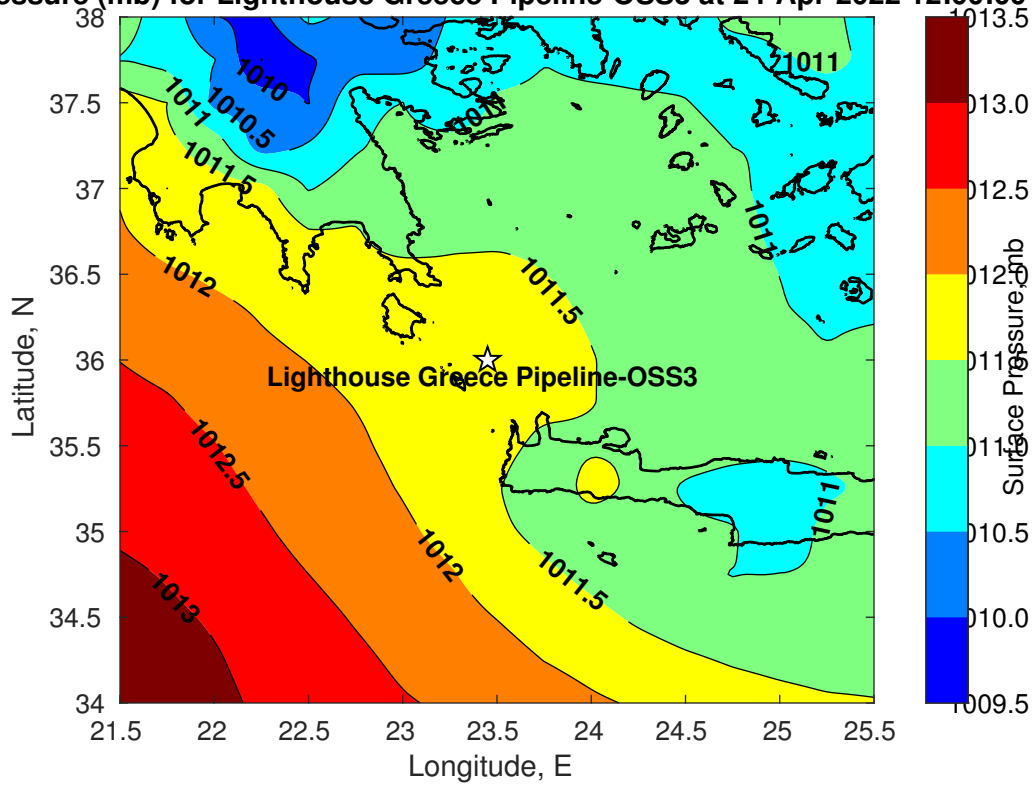
Winds (kts) for Lighthouse Greece Pipeline-OSS3 at 24-Apr-2022 12:00:00



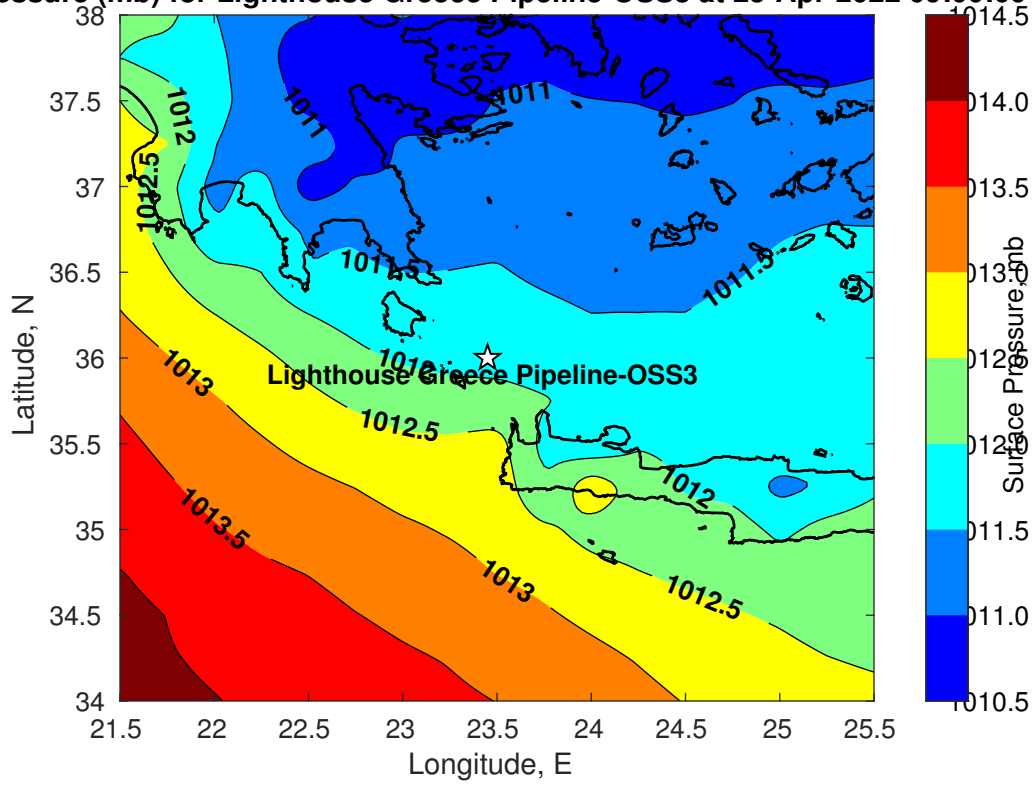
Currents for Lighthouse Greece Pipeline-OSS3 at 24-Apr-2022 00:00:00



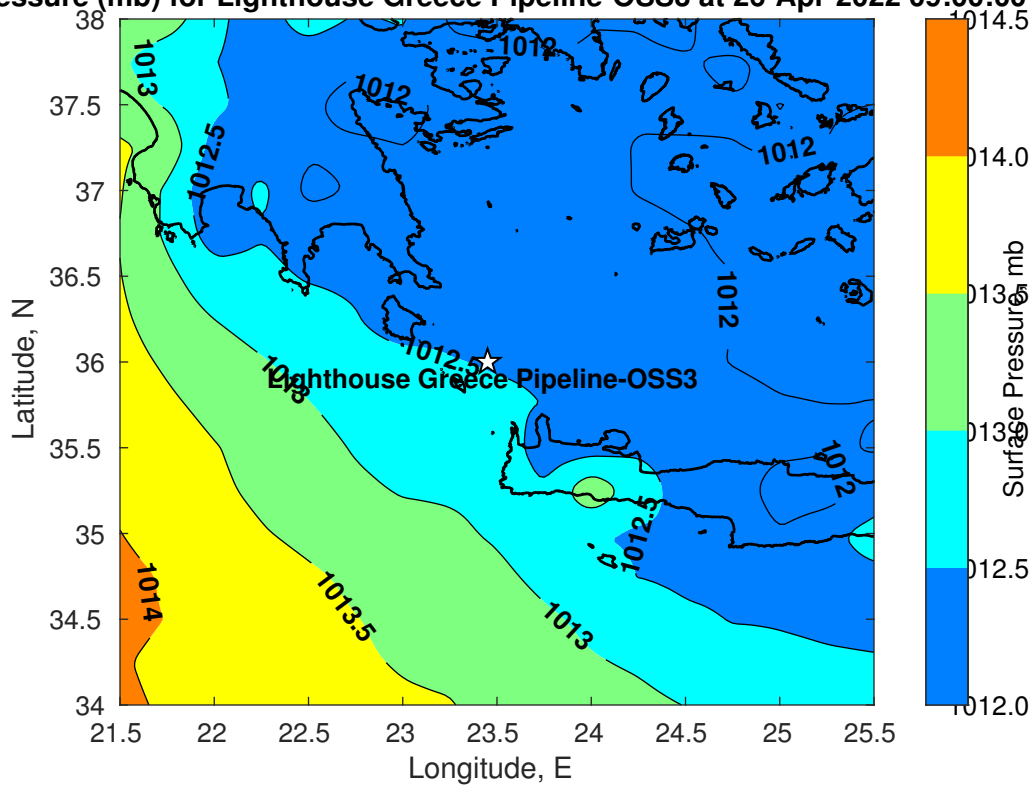
Surface Pressure (mb) for Lighthouse Greece Pipeline-OSS3 at 24-Apr-2022 12:00:00



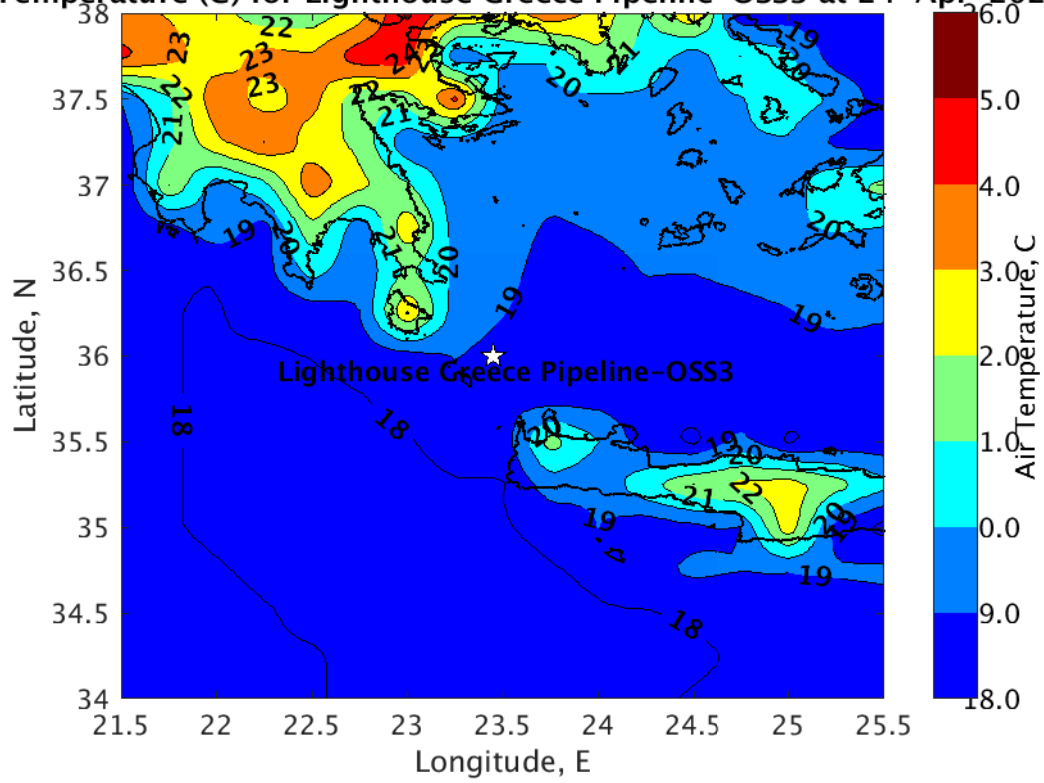
Surface Pressure (mb) for Lighthouse Greece Pipeline-OSS3 at 25-Apr-2022 09:00:00



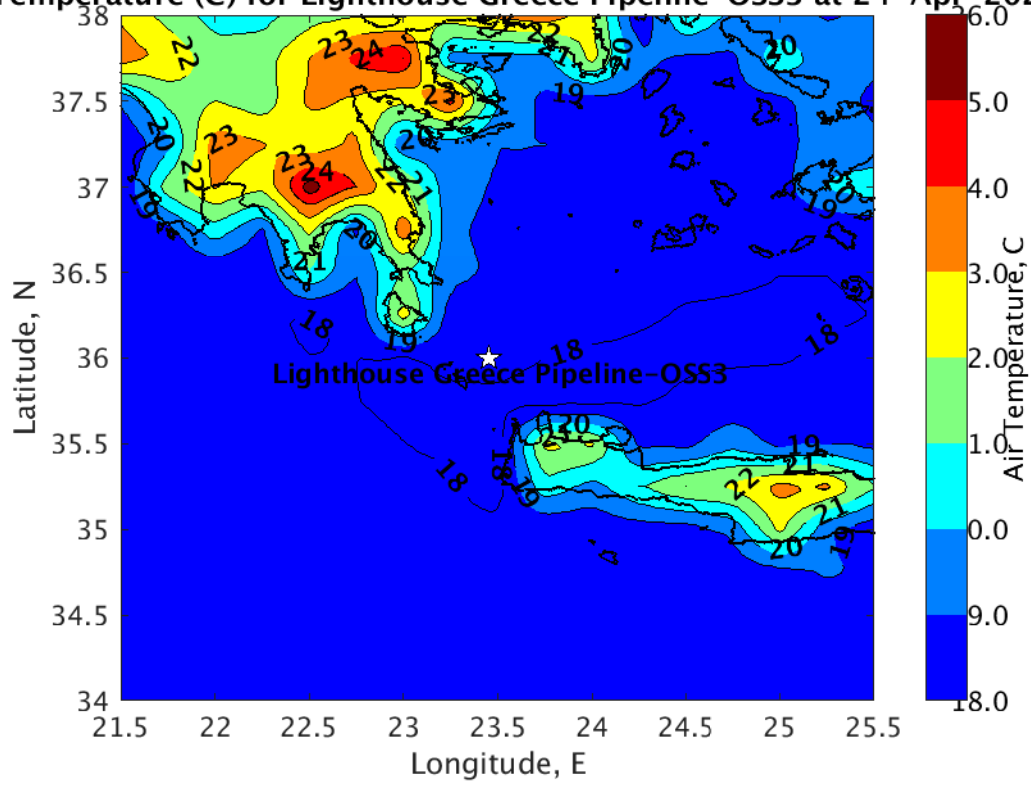
Surface Pressure (mb) for Lighthouse Greece Pipeline-OSS3 at 26-Apr-2022 09:00:00



Temperature (C) for Lighthouse Greece Pipeline-OSS3 at 24-Apr-2022



Temperature (C) for Lighthouse Greece Pipeline-OSS3 at 24-Apr-2022



Temperature (C) for Lighthouse Greece Pipeline-OSS3 at 24-Apr-2022

